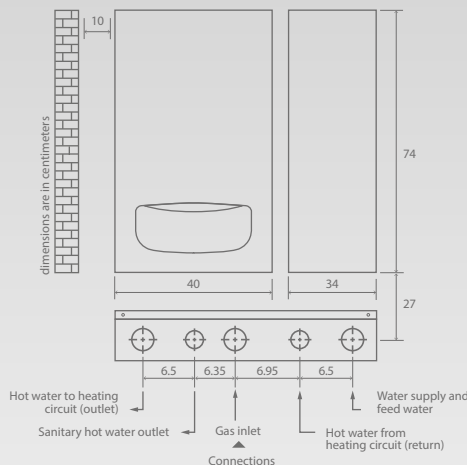
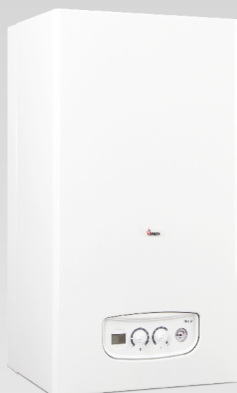


Quaxial chimney



## Verona 24RSi

- Room Sealed
  - Instant and continuous hot water, reliable and independent heating
  - High efficiency, 93.05%
  - Latest electronic and mechanical systems
  - Three speed circulator pump
  - Three way valve
  - Active Combustion Control System
  - Italian sanitary water heat exchanger
  - Atmospheric burner with auto-ignition
  - Ionized flame protection
  - Microprocessor controls
  - Electronic troubleshooting system
  - Anti-freeze system
  - Pump and valve anti-lock system
  - Water temperature stabilization system
  - Automatic bypass
  - Min and Max heating water pressure control
  - Max heating circuit temperature control
  - Equipped with a digital display
  - Different working status of the boiler
  - Flow heating temperature in CH function and standby mode
  - Output sanitary water temperature in DHW function
  - Error codes in case of safety intervention
  - 25 different Error codes in case of safety intervention, Ability to store 10 recent error codes
  - Automatic gas flow control
  - Ability to connect to room thermostats
  - Equipped with fan for exhaust fumes (forced flue)
  - Ability to install an exterior weather temperature sensor
- This model is appropriate for:
- Units up to 210 square meters

technical informations	Units	Verona 24RSi
Heating Capacity – In	kW	26
Heating Capacity – Out	kW	24.19
Max. Water Temp. – Heating	°C	90
Max. Water Temp. – Sanitary	°C	60
Min. Start-up Water Pressure	bar	0.13
Max. Pump Height	m.w.c	5
Expansion Vessel Capacity	lit	8
Pipe Diameter – Heating	inch	3/4
Pipe Diameter – Sanitary	inch	1/2
Pipe Diameter – Gas Inlet	inch	3/4
Chimney Diameter	cm	6 10
Net. Weight	kg	31
Width	mm	400
Height	mm	740
Depth	mm	340